

WGMS Show Display Case Reservation

Exhibits provided by WGMS members are a very important feature of our yearly show. If you can provide an exhibit and/or need a case, please fill out this form and return to: Lyle Koerper, 1644 Valleyview Ct., Wichita, KS 67212, or Bill Smith, PO Box 311, Hardtner, KS 67057-0311.

The club has many cases of different sizes available. Eight new lighted cases are being built. Please provide complete information below, if possible by April 1. Use back if necessary.

____ I will provide ____ show exhibits, and have my own cases, size _____.

My exhibit(s) will be _____.

____ I will provide ____ show exhibits, but need cases.

____ Wichita (unlighted) cases will be OK (Size: 30"W, 24"D, 3 H front 5" H back).

My exhibit(s) will be _____.

____ I will provide ____ show exhibits, but need WGMS lighted cases.

My exhibit(s) will be and each will require space as indicated.

Name _____

Address _____

Phone _____ email _____

Exhibits must be set up Thursday and remain in place through 5 p. m. Sunday.

LYLE KOERPER
1644 N VALLEYVIEW CT
WICHITA , KS 67212-1243



Tiger's Eye

By Carolyn White



Tiger's eye is a beautiful semi precious gemstone with a silky pattern of parallel lines that seem to move as the stone is turned. This effect is known as chatoyance and is caused by the fibrous structure of tiger's eye.

Tiger's eye has long been referred to as an example of pseudomorphism, where one mineral replaces another but retains the first mineral's shape. In the case of tiger's eye, fibrous crocidolite (blue asbestos) is replaced by quartz (silica).

Recent mineralogical studies suggest that the fibrous texture of tiger's eye is not caused by pseudomorphic substitution, but by simultaneous formation of crocidolite fibers and quartz through a crack-seal vein-filling process.

Due to its fibrous structure, tiger's eye has to be cut exactly parallel to the length of the fiber in order to get the full chatoyance. A saw cut that is perpendicular to the fibers will produce a dark brown stone that is dull and lifeless.

Tiger's eye is most commonly a golden brown due to the presence of hydrous iron oxide. The absence of this mineral produces a blue/grey version, which is called *falcon's eye* or *hawk eye*. Red tiger eye is created through heat treatment and is also called cherry tiger eye, dragon's eye or ox eye.

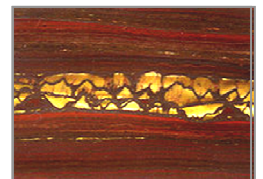
Ancient Egyptians believed the beautiful tiger eye would bring good fortune and protect its bearer. They related this well-being to the sun which they worshiped as a god. Roman soldiers wore tiger's-eye for protection in battle. Tiger Eye was thought to be all seeing due to its appearance. Wearing tiger's eye is still considered to be beneficial for health and spiritual well being.

In 1968 South Africa, the primary source for tiger's eye, announced an embargo on the exportation of rough tiger's eye in an effort to gain a monopoly on finished stones. Huge quantities of rough stone were smuggled out of Africa, preserving the supply but increasing the price. The ban decreased the supply of rough available to the small volume cutter, however finished stones are both abundant and inexpensive.

Tiger iron is a rock composed of tiger's eye, red jasper, and black hematite. Its contrasting bands of color and luster create an attractive pattern. Tiger iron is a popular material most commonly used for jewelry and ornamentation. Along with tiger's eye it is mined primarily in South Africa and Western Australia.



Unpolished, Hawks Eye South Africa



Tiger Iron



Tiger eye with iron stripes

Sources:

- Rock and Gem by Ronal Louis Bonewitz
- http://en.wikipedia.org/wiki/Tiger's_Eye
- <http://www.quartzpage.de/eyes.html>
- <http://www.tigereyejewels.com/page/862055>
- http://www.all-that-gifts.com/se/tigers_eye.html
- <http://topgems.homestead.com/>
- <http://www.jewelryartistmagazine.com/feature/jul00str.cfm>

Photos from <http://wikipedia.com>

Member of the Rocky Mountain Federation of Mineralogical Societies



Affiliated with the American Federation of Mineralogical Societies



2010 - 2011 Officers

Board of Directors

President	Tony Giardina.....	316-214-8227 karen@van-m.com
Vice-President	Don Atherton	316-685-2725 datherton6@cox.net
Secretary	Tonona Martin.....	316-708-3488 tononamartin@yahoo.com
Treasurer	Sandy Whiting	316-744-8848 hoglips@aol.com
Membership	Susan Bannon	316-689-8256
Editor	Carolyn White.....	316-250-6182 carolyn.white1@cox.net, editor@wgmsks.org
Field Trip	Joe Cruz.....	316-218-0250 ardis.cruz@cox.net
Publicity.....	Leo Heidebrecht.....	316-260-4591 leomar@cox.net
Show Chair	Gene Maggard.....	316-742-3746 gandpmaggard@wildblue.net
Finance	Bob Haines.....	316-683-9021 bobh67218@yahoo.com
Director 2011.....	Peggy Maggard.....	316-742-3746
Director 2012.....	Naomi Matney.....	316-265-2665
Director 2013.....	Ardis Cruz.....	316-218-0250

Appointed Officers

Cheer	Alice Piper	316-264-7273
Curator.....	Greg Weisbrod	316-686-1810
Federation Rep	Bill & Janet Smith	620-296-4652 beetlebill@kanokla.net
Gifts	Paul Radiel	316-777-4174
Historian	Mary Clough	316-943-1785
Hospitality	Debbie Winton	316-841-8773 cwinton@pixius.net
Insurance/Property.....	Peggy Maggard	316-742-3746 gandpmaggard@wildblue.net
Junior Leader	Elizabeth Hixon.....	316-651-0054 ebeth.horselover@gmail.com
Librarian	Jim Yanda	620-455-2419 oxford@oldwiz.net
Registered Agent.....	Alice Piper	316-264-7273
Webmaster.....	Diane DeGood.....	316-794-8391

Dues:

Club Year September 1 - August 31	
Adult Membership	\$10.00
Junior Membership (13-17)	\$ 5.00 (must have adult sponsor)
Quarry Quips Subscription ONLY	\$ 8.00

Please send dues to: **WGMS Treasurer,**
c/o Susan Bannon, 11825 E 1st St N, Wichita KS 67206-2732

Our Annual show will be:
April 15, 16 & 17 2011
World of Wonders

About our Club

The Wichita Gem and Mineral Society Inc. is a 501(c)(3) nonprofit, tax-exempt, educational organization. Our purpose shall be exclusively educational and scientific; (a) to increase and disseminate knowledge of the earth sciences pertaining to minerals, gems, rocks, artifacts, and fossils and similar subjects; (b) to promote and perpetuate knowledge of the lapidary arts; © to encourage field trips to study the earth sciences, particularly of geology and mineralization in place and (d) to encourage greater public interest and education in gems, fossils and minerals, cooperating with established institutions in such matters.

The Wichita Gem and Mineral Society, Inc. meets the fourth Sunday of each month at 2:00 p.m. in Room 101, Geology Building, Wichita State University. - Except - January (Anniversary Party); April (Annual Show); August (Picnic & Auction). (November and December meetings are subject to University holiday closings.) Times and locations to be announced/published. WGMS does NOT offer classes or workshops.

Board meetings are held on the Monday preceding the General meeting at places announced and/or printed in the Quarry Quips, the official bulletin of the Society. ALL members are urged to contribute material for publication in the Quarry Quips, the deadline for ALL articles is the Friday following the General meeting. All articles should be submitted by e-mail to: editor@wgmsks.org or snail mail to:

Carolyn White
2225 N. Fountain
Wichita KS 67220

Club mailing address:

Wichita Gem and Mineral Society Inc.
PO Box 1464
Wichita KS 67201-1464
Web Address: www.wgmsks.org



The Quarry Quips is published monthly by the Wichita Gem & Mineral Society, Inc. Articles printed in this newsletter are the experiences and/or opinions of the individuals submitting them, they do not necessarily reflect the views or opinions of the Wichita Gem & Mineral Society or the editor. We are not responsible for their authenticity, safety, or reliability. Caution and safety should always be practiced when trying out any new idea. Articles written without a byline are written by the editor.

Copyright © 2010 Wichita Gem & Mineral Society, Inc.

Except for items that are specifically copyrighted by their authors, other societies may use material published in the Quarry Quips provided that proper credit is given to the Author (if author is a WGMS member it will be so noted in the byline, please include this "WGMS member" in the byline) and the Quarry Quips, and the sense or meaning of the material is not changed.

Exchange Bulletins Welcome

Field Trips

Submitted for Joe Cruz by Ardis Cruz

On December 11 we had a really good turn out to view our collection of fossils and other neat stuff with a total of 23 people mostly club members and a few guests. We answered a lot of really good questions and gave some advice on how to prep specimens. We were giving away a door prize and Arleeta Seery was the winner.

Next up is a visit to museums in Emporia.

Meet at the Johnston Geology Museum on Emporia State Campus, Cram Hall, 14th and Merchant Street

10:00 Saturday February 12th.

Directions: take the Turnpike to Emporia, exit the turnpike on the exit for I-35 north, look for exit 130, which is Merchant Street, go to 14th and Merchant. It's really easier than it sounds.

The following are some things we will see and learn about. A western Kansas Cretaceous mosasaur, a giant ground sloth and a mastadon tusk plus other displays in the ESU Geology Museum. There are also geological specimens predominantly from Kansas including some from the Hamilton Quarry now closed to hunting and owned by ESU, a display of Tri-State Mining area items, petrified tree stumps and Indian artifact collections.



**WE NEED YOU TO CALL US SO
WE CAN TELL THEM HOW
MANY TO EXPECT AS WE HAVE
TO MAKE AN APPOINTMENT TO
HAVE THE BUILDING OPEN
FOR US!**

Joe or Ardis 218-0250. If we don't answer just leave a message.

When we leave there we will have a lunch break then go on to the One Room School Museum a few blocks on down on Merchant. If you are still game after that we can go to the Lyon County Historical Museum located in Emporia if it's still open at that time.

Upcoming field trip ideas:

- March – Crystals & geodes.
- April – Salt Plains in Oklahoma. That will be **AFTER** our Annual Show, which I hope you will all be helping out with.

As always please RSVP unless we tell you otherwise.

Joe & Ardis Cruz



Membership News

By Susan Bannon

Please add the following returning member to your directory:



Jan Stalcup, BD: 1/8
1091 SW 70th St
El Dorado, KS 67042-9024
316-321-1300 cell: 316-305-5055
foxtrotmem@sbcglobal.net

Don't forget the bracelet beading class on Saturday, Jan 8th at 9 am. Bring \$5.00 to cover cost of supplies and a sack lunch. Class will be held at

Marci Fleeker's house
2166 S. Topeka
Wichita, KS 67211
316-2628392



Programs

By Don Atherton

The program that was presented for the December was a DVD, "How the Earth was Made--The Rocky Mountains. The program was how the Rocky Mountains were made and how they rose up to 24,000 feet high and then was reduced to 12,000 to 14,000 high by erosion and glaciers. The mountains were formed by two tectonic plates pushing into each other causing the land to rise over a period of many millions of years. The glaciers caused much of the mountains structure as we see them today as there were many glaciers over 140 million years with four major glaciers that were several miles thick. They are still growing up to about an inch in about every ten years.

Show and Tell--Steve Hurlock bought a small 4 inch saw with a grinder and polisher that he cleaned up and repainted.

Remember that the program for January is our annual anniversary party at the Community of Christ Church at 3500 S Webb Road. This will include an auction so bring some items to donate for the auction. See you there on Jan. 23, 2011 at 2.00 pm.

WGMS Board Meeting Minutes

By Carolyn White



The Board of Officers for the Wichita Gem & Mineral Society met December 15, 2010 at 7:00 pm in the Community of Christ Church.

Present were: Tony Giardina, Gene Maggard, Peggy Maggard, Don Atherton, Susan Bannon, Leo Heidebrecht, Ardis Cruz, Bob Haines, Sandy Whiting and Carolyn White.

Correction noted to the December General Meeting Minutes: Debbie Moore was collecting names for the Lawn Flower and Garden Show.

Don Atherton, Vice President announced that a program on meteorites would be presented in February by Greg Novachek, WSU professor. National Geographic film, "The Rockies" was selected for the December program.

Sandy Whiting, Treasurer presented vouchers:

- \$70.30, Lyle Koerper, Garden show reservation fee
- \$207.00 RMFMS annual dues

Gene Maggard moved that the vouchers be paid, Bob Haines seconded. Motion passed.

Carolyn White, Editor asked the board about the possibility of publishing the newsletter less frequently due to time constraints up in the coming year - The board determined that was not in keeping with the bylaws and discussed the possibility of moving to email distribution as an alternative solution. Gene Maggard moved that email distribution be used to distribute the newsletter except when no email address is available or by specific request to the editor for USPS distribution. Don Atherton seconded the motion. Motion passed.

Ardis Cruz, Director reported that 15 members came to the December field trip and that Arleta Seery won the door prize. She announced a February field trip to a Museum in Emporia. Gene Maggard announced that the January field trip would be cancelled due to the surgery he is undergoing in December.

Leo Heidebrecht, Publicity, said that Rock and Gem has not yet published our show dates. He will follow up with them. He will also be placing an add in the Hutchinson newspaper.

Bob Haines, Finance, discussed revising the bylaws budget requirements. He will submit the proposal to membership in the February Quarry Quips and meeting. Membership will vote on the proposal in March.

Gene Maggard shared with the board price quotes he obtained for extension plaques for the Rockhound of the Year and Outstanding Service Awards. Gene moved that the board allow up to \$400 for that purchase. Susan Bannon seconded the motion. Motion passed.

Nominations for Outstanding Service Award were voted on by the board. The award will be presented in the

January meeting.

WGMS General Meeting Minutes

The general meeting of the Wichita Gem & Mineral Society was called to order by Vice President Don Atherton at 2:00pm on 12/19/10 at Wichita State University. Minutes from the last meeting were approved.

Susan Bannon, Membership announced that there were 35 members in attendance. Door prizes were won by:

- Jim Bles ~ Badge, belt buckle
- Membership ~ Diane Greep, gem tree by Susan Bannon
- Marci Fleeker - Christmas Spider by Mary Clough

Carolyn White, Editor, announced that we would move to email distribution of the newsletter following the January meeting. Members who do not have an email address and members who specifically request it will continue to receive their newsletter via the US postal service. Curley Clough asked if this keep us from receiving bulk mail rates. Carolyn confirmed that it will.

Ardis Cruz gave a field trip report for Joe. She showed us the door prize won by Arleta Seery during the December field trip at the Cruz museum and reported a good turn out. She announced that they are planning a museum field trip in February and that Joe has several field trips planned for the spring and summer.

Gene Maggard, Show Chairman, asked members to let him know what specimens they have that would be good for the World of Wonders display case at the April show. Gene shared with members that he is having a kidney removed in December and will be cancelling the January field trip scheduled at his workshop. He suggested alternative dates - February 26th was selected. Gene said there is still room in several of the classes and asked that members contact him to sign up for a class.

Susan Bannon showed samples of beaded bracelets and announced that members who would like to make a bracelet can come to Marci Fleeker's house on Saturday, Jan 8th at 9am. Bring your lunch and \$5 to cover cost of supplies.

Lyle Koerper shared the theme for the WGMS booth at the Garden Show... "Our Little House on the Prairie" Lyle showed doll house furniture made from petrified wood by a past WGMS member that will be in the display and asked for volunteers who will learn the history of the cabin and furniture created by WGMS members that will be displayed in the booth. Debby Moore circulated a sign up sheet for the Garden Show.

Debbie Winton, Hospitality, reminded members to sign up to bring snacks and ice for future meetings.

Alice Piper, Cheer, encouraged members to notify her when a card needs to be sent to a WGMS member.

Mary Clough, Historian announced that she is looking for information on past WGMS member Rex Friday. He used to have a barbershop by East high and his son used to be a salesman for Murray Bicycle shop. If you can help Mary locate his family call her at 943-1785.

Chips From the Quarry



- Gene Maggard had surgery on December 23 to remove a kidney with a cancerous growth. The surgery went well and they were able to remove the cancer.
- Horace Patterson had surgery on his arm on Friday, December 30th.
- George Mack has been ill

Contact Alice Piper at 316-264-7273 to have a card sent to a member who is ill or grieving.

Contact Carolyn White at carolyn.white1@cox.net or at 250-6182 to put a notice in the Quarry Quips.



WGMS Library

We have a lot of great books in the WGMS library. It is open when we have a club meeting at WSU. Members can check out books for one month.



Member Birthdays

January:

01	Albert White
07	Delpha Boggs, Ralph Seery
08	Janet Stalcup
09	Jodi Seager
12	Lindsay McCall
14	Sandy Whiting, Cindy Walker
15	Lyle Koerper
16	Naida House
17	W Peter Sullivan
22	Merle White
24	Jim Yanda
27	Charles Casey
29	Paul Radial



February:

01	Seth Krystalyn, Ray Vitkus
02	Ruby Moore
11	Charlotte Norris, Stanley Ayers
20	Lillian Simmons
22	Aileen Wilson, Jim Nutter
24	Roger Pollard

The Year Ahead



General Club Meetings

Jan 23	Anniversary Party/Meeting Community of Christ Church 3500 S Webb Rd	2 pm
Feb 27	WSU Geology Bldg, Rm 101	2 pm
Mar 27	WSU Geology Bldg, Rm 101	2 pm
Apr 15-17	WGMS SHOW Cessna Activity Center	
May 29	WSU Geology Bldg, Rm 101	2 pm
Jun 26	WSU Geology Bldg, Rm 101	2 pm
Jul 24	WSU Geology Bldg, Rm 101	2 pm
Aug 27	Rock Sale, Pot Luck and Auction Community of Christ Church	
Sep 25	WSU Geology Bldg, Rm 101	2 pm
Oct 23	WSU Geology Bldg, Rm 101	2 pm

Board Meetings

Jan 17	Community of Christi Church	7 pm
Feb 21	Community of Christi Church	7 pm
Mar 21	Community of Christi Church	7 pm
Apr 11	Community of Christi Church	7 pm
May 16	Community of Christi Church	7 pm
Jun 20	Maggard's House 8318 SE Hwy 77, Leon	6 pm
Jul 18	Community of Christi Church	7 pm
Aug 22	Community of Christi Church	7 pm
Sep 19	Community of Christi Church	7 pm
Oct 17	Community of Christi Church	7 pm

Field Trips

Jan 8	Beading Class, Susan Bannon @ Marci Fleeker's, 2166 S Topeka \$5 fee to cover cost, bring sack lunch	9 am
Feb 26	Maggard Workshop 8318 SE Hwy 77, Leon	10 am

Snack Sign-up



We need some people to sign up for snacks.

Please call Debbie Winton: 841-9576 to volunteer.

2011 Show Committee

Note: Additional people are needed to serve on the Show Committee.

If you are interested in any way, please call Gene Maggard, show chair, at 742-3746. Ideally we'd like to have 2 people in each spot.



Don't know what you'd enjoy helping with? That is ok, pick one. Next year try something else! Some one already assigned to the area you are interested in? That's ok too. We like to share!

Current Show Committee Members

Chairman	Gene Maggard	316-742-3746
Admissions	Peggy Maggard	316-742-3746
Announcer	Lisa Scheibmeir	620-727-5590
Dealers	David Hardin	316-946-0008
Demonstrators	Debby Moore	316-524-6001
Editor	Carolyn White	316-250-6182
Electrical	Greg Weisbrod	316-686-1810
Fluorescents	Ray Adams	316-942-7006
Gem Hunt	David Hardin	316-946-0008
Grab Bags	Carolyn White	316-250-6182
Junior Rock Pile	Alan DeGood	316-794-8391
Membership	Susan Bannon	316-689-8256
President	Tony Giardina	316-214-8227
Publicity	Leo Heidebrecht	316-260-4591
Education Day	Pat Clough-McCombs Mary Clough	316-210-7380 316-943-1785
Secretary	Tonona Martin	316-708-3488
Hospitality	Debbie Winton	316-841-8773
Security	Tony McClafin	785-489-2248
Set Up	Lyle Koerper	316-722-7115
Silent Auction	Larry Skelton	316-722-1267
Volunteer Coord	Open	
Webmaster	Diane DeGood	316-794-8391
Wheel	Alice Piper	316-264-7273

Show Report

By Gene Maggard

The time is here for getting serious about planning the show. Signup sheets for working at the show will be available at the January meeting. I hope to see you there and I also hope that you have scheduled as much time as possible to work at the show.

As usual, we will need as much help as possible on Thursday for the setup. Friday is always very busy and requires the maximum number of club volunteers to work the various activities.

Are you thinking about setting up an exhibit? Any and all themes for exhibits are ok, but remember that our show theme this year is "World of Wonders." If you have any minerals from around the world, displaying them with appropriate labeling identifying the type of mineral and country of origin would be great.

We also need high quality mineral specimens for the Special Exhibit case. Please let me know what you have that might display well in the Special Exhibit case.

An Exhibit Reservation Form is attached to this newsletter. Use it to reserve your space, and case, if needed. You can also request an exhibit form from either Lyle or I at any time. The deadline for submitting the form will be around April 1.

We still need more show committee members. If you are not a committee member but are interested in being on the committee, please let me know. We can for sure find a spot for you.

One reason that WGMS always has such a great show is because of the widespread participation of club members at the show. I will be looking forward to working with all of you in putting on another great show.

~~January February Field Trip~~

Gene Maggard



The Maggard field trip has been rescheduled to Saturday, February 26th. There is still room in some of the classes - contact Gene @ 742-3746 to register for a class.

Basic classes are planned to be offered in Cabbings, Silversmithing, Wire Wrapping, Bead Stringing, Basic Rock, Mineral and Fossil Identification, and Sphere Making. Start time will be 10am. There will be a fee charged for some classes to cover the cost of materials provided.

We will have a pot luck lunch, just like all the others: 1 main dish and 1 or 2 sides. Gene will probably feel really energetic and have a pot full of vegetable soup or chili. Beware, he puts dead deer in his pots of stuff.

Fun, And Smell the Roses

by Lyle Koerper



Yes, all of this can be yours when you volunteer to help staff the Wichita Gem & Mineral Society exhibit at the Wichita Garden Show.

The WGMS exhibit has proven to be a major attendance builder for our April show. Helping staff the exhibit has also proven to be a good time for WGMS members.

The Garden Show will be at Century II March 2-6. The show is open mornings, afternoons, and evenings.

Theme this year is "Gardens in the Movies." Theme for the WGMS exhibit will be "Our Little House on the Prairie."

Featured will be WGMS's stone settlers cabin. The cabin, when set up, rests in a natural environment with a live garden and perhaps even a pond.



Help is still needed to make the "Our Little House" come alive. If you can contribute to creating a miniature garden, please contact Lyle Koerper at 722-7115.

Debby Moore has been signing up WGMS members to staff the exhibit. The Garden Show wants names of those who will be working (and who will receive show passes) by February 1. Be sure to sign up in writing, even if you have simply said, "I can work anytime." Shifts are generally three or four hours, and a person may work more than one shift.

And, by the way, there will certainly be a lovely rose exhibit at the Garden Show. So you can visit that before or after your fun time at the WGMS exhibit.

Newsletter Distribution

By Carolyn White

WGMS will change to email distribution of its monthly newsletter after the January Anniversary meeting.

- Members who do not have an email address will continue to receive their Quarry Quips via the US Postal Service.
- Members who specifically ask the editor to continue mailing their Quarry Quips will also receive their newsletter via the US Postal Service.
- All other members will get an electronic copy of their Quarry Quips via their email address.
- If you have an email address but are not currently getting the email version, you can send your email address to me at :

carolyn.white1@cox.net or
editor@wgmsks.org



Show Calendar

For a more complete list of all shows go to:
<http://www.rockngem.com/showdates.asp>
or refer to a copy of Rock & Gem Magazine.



JANUARY:

14-16—GLOBE, ARIZONA: 54th annual show; Gila Co. Gem & Mineral Society; Gila County Fair Grounds, 3 mi. north of US 60-70 Junction; Fri. 9-5, Sat. 9-5, Sun. 9-4; live demonstrations, door prizes, displays, minerals, jewelry; contact Val Lathem, (602) 466-3060; e-mail: val65@cox.net

15-16—FREDERICKSBURG, TEXAS: 42nd annual show, "Hill Country Gem & Mineral Show"; Fredericksburg Rockhounds; Pioneer Pavilion, Lady Bird Johnson Municipal Park; Sat. 9-6, Sun. 10-5; free admission; contact Jeff Smith, 208 Castle Pines Dr., Kerrville, TX 78028, (830) 895-9630; e-mail: jeff-brenda@windstreram.net; Web site: www.fredericksburgrockhounds.org

21-23—HILLSBORO, OREGON: Show; Gem Faire Inc.; Washington County Fairgrounds, 873 NE 34th Ave.; Fri. 12-6, Sat. 10-6, Sun. 10-5; \$7 weekend pass; contact Yooy Nelson, (503) 252-8300; e-mail: info@gemfaire.com; Web site: www.gemfaire.com

FEBRUARY:

10-13—TUCSON, ARIZONA: Show; Tucson Gem & Mineral Society; Tucson Convention Center, 260 S. Church St.; Thu. 10-6, Fri. 10-6, Sat. 10-6, Sun. 10-5; adults \$10, seniors and active military \$2 off Fri. admission, children under 14 free with adult; contact TGMS, P.O. Box 42588, Tucson, AZ 85733, (520) 322-5773; e-mail: tgms@tgms.org; Web site: www.tgms.org

19-20—MESA, ARIZONA: Show, "2011: Rocks From Heaven"; Apache Junction Rock & Gem Club; Skyline High School, 845 S. Crismon Rd.; Sat. 9-5, Sun. 10-4; adults \$3, students \$1, children under 12 free; vendors, jewelry, gemstones, cabochons, rocks, minerals, fossils, beads, findings, lapidary equipment, lapidary supplies, silent auction, gem tree making, wheel of rocks, grand raffle; contact Wally Frlich, 463 N. Valley Dr., Apache Junction, AZ 85120; (480) 982-7760; e-mail: wfrlich@hotmail.com; Web site: www.ajrockclub.com

25-27—GOLDEN, COLORADO: Show; Denver Gem & Mineral Guild; Jefferson County Fairgrounds, 15200 W. 6th Ave.; Fri. 10-6, Sat. 10-6, Sun. 11-5; free admission; gem-cutting demonstrations, geode cutting, mineral sample bags, mineral displays, dealers, gems, minerals, fossils, geodes, jewelry, books; contact Joseph Payne, 6101 S Logan Ct., Centennial, CO 80121, (303) 783-0221; e-mail: jpayne@englewoodgov.org; Web site: www.denvergem.org

MARCH:

5-6—BIG SPRING, TEXAS: 42nd annual show; Big Spring Prospectors Club; Howard County Fair Barn; Sat. 9-5, Sun. 10-5; free admission; gems, minerals, jewelry, dealers, demonstrations, displays, spinning wheel, hourly prizes, jewelry repair, stone setting; contact Jerald Wilson, 707 Tulane, Big Spring, TX 79720, (432) 263-4662, or Lola Lamb, (432) 263-3340

ALL ROADS LEAD TO COLORDAO SPRINGS: RMFMS 2011— NABBING A 14'ER

By Dr. Mike Nelson, CSMS & LGGMC

Via Rocky Mountain News, December 2010



RMFMS visitors to Colorado Springs for the summer 2011 meeting may have an interest in exploring some high altitude mining relics, and becoming a “peak bagger” with an ascent of a Colorado 14'er— Mt Sherman. As always, much depends upon the early summer weather and plans may need to be completed at the last moment. But, this article will give readers a chance to “dream a little” over the winter.

The State of Colorado seems to have a number of place localities named after military personnel, especially those who served in the U. S. Civil War and/or the post-war battles with the local Native American population. One of the more famous, at least in the annals of peak bagging Colorado 14'ers, is Mt. Sherman, located in the Mosquito Range west of Fairplay and east of Leadville (Fairplay is approximately 100 miles west of Colorado Springs). At 14,036 feet Mt. Sherman ranks number 44 among Colorado's highest peaks. Mt. Sherman is named for William Tecumseh Sherman (1820-1891), a Union general during the U. S. Civil War and who later (1865) was placed in charge of the Military Division of Missouri that included all lands west of the Mississippi River (except the west coast). His major job was to provide troops to protect the railroads, both operating and in construction, from Native Americans concerned about encroachment upon their lands. In 1869 he succeeded newly elected President U. S. Grant as Commanding General of the United States Army.

Approximately 1.3 miles southwest of Mt. Sherman is Mt. Sheridan (Fig. 1) checking in at 13,748 feet (number 126th among Colorado's peaks). Mt. Sheridan was named after General Philip Sheridan (1831-1888), a Civil War hero for the Union, and like Sherman, later active in the battles with Native Americans of the west, including Colorado. Serving in the southern states directly after the Civil War, Sheridan moved west in 1867 as Sherman appointed him commander of the Department of Missouri succeeding the unpopular General Winfield S. Hancock. As such, Sheridan was headquartered at Fort Leavenworth, Kansas, and later Chicago, Illinois, but often ventured west into the field. He played a direct part in the Battle of Beecher Island (Battle of the Arikaree) that took place near Wray, Colorado, in 1868. As commanding General, Sheridan authorized the formation of the “Forsyth Scouts” (civilian frontiersmen) as a fast moving “ranger unit” designed to help combat hostiles. Col. George Forsyth recruited 50+ men who from September 17-25, 1868 holed up on a small island or sand bar in the Arikaree Fork of the Republican River surrounded by a few hundred Native Americans, mostly Northern Cheyennes. After the death of one of their most respected fighters, Roman Nose, the hostiles begin to dissipate and disappeared completely upon the arrival of Capt. Louis Carpenter and Company H of the U. S. 10th Cavalry. Beecher Island has been of great personal interest to me since almost all of the Scouts were recruited from within a small radius of my hometown in central Kansas.



Fig. 1. Summit of Mt. Sheridan (13748') looking west across the rift valley of the Arkansas River with the Sawatch Range in the distance.

The mining districts associated with Mts. Sheridan and Sherman include Horseshoe and Peerless to the south, Sacramento and Fourmile to the east, and the greater Alma District to the north. These districts are located in the Mosquito Range, one of the large Laramide features associated with uplift of the “Rocky Mountains.” The Mosquito Range is arbitrarily separated from the Tenmile Range to the north at the Continental Divide running between Fremont Pass and Hoosier Pass. The southern part of the Range, a series of low ridges, ends near the Arkansas River at Salida. The western boundary of the Range has some spectacular structural geology in the form of the bounding Mosquito and Weston Faults. The eastern boundary is less sharp where east-sloping Paleozoic rocks begin to cover the Precambrian basement rocks and in turn are covered by the basin-fill rocks of South Park (Reed and Ellis, 2009).

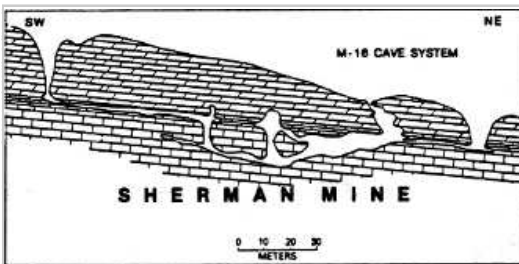


Fig. 2. Paleokarst (solution cavities) in the Leadville Limestone at the Sherman Mine (from Tshauder and others, 1990). Base and precious metal bodies follow these solution channels and include silver-bearing lead ore and sphalerite (zinc ore).

The mining associated with Mts. Sheridan and Sherman has an interesting and colorful history. The major producing mines of the region, including
(continued on page 9)

the Sherman, Dauntless, Last Chance, and Hilltop, (seem to produce from old caves and sinkholes (solution channels or paleokarst) in the Leadville Limestone---and perhaps a few other limy formations. The Sherman Mine, immediately west on the flank of Mt. Sherman at the base of the Iowa Amphitheater (head of Iowa Gulch), started in 1968, closed in 1970, reopened in 1975, closed in 1982 and produced 10 million oz. of silver (Mineral Data, 2009). Maslyn (1996) has mapped three different cave systems and 34 sinkholes at the Sherman Mine (Fig. 2).

A bonus collectable mineral from the Sherman is golden barite (Fig. 3). The Hilltop Mine is one of the more recognizable abandoned mines in the region since some buildings remain and hikers on the way to either Mt. Sheridan or Sherman pass directly by the site (~13000 feet in elevation). The Hilltop also produced from solution channels and commenced operations in 1887. Published reports (McConnell, 1966) describe a room in the Hilltop termed the "Ice Palace" for its glittering walls covered by ores of silver, lead, and zinc. That must have been a fantastic chamber.

South of Mt. Sheridan are the Peerless Mountain and Horseshoe Mountain mining areas, and small glory holes and exploration pits are scattered throughout the area. Most of the mining in the Peerless-Horseshoe area occurred post- 1870 after Samuel MacMillian discovered silver near the head of Fourmile Creek. In 1880 the Mudsill Mine was opened on the north rim of Horseshoe Mountain (McConnel, 1996). Mining must have continued well into the 20th century since "modern looking" equipment is scatted about at several localities.

Although the Hilltop seemed to be a steady producer, the repeal of the Sherman Silver Purchase Act in 1893 (named for John Sherman, Ohio Senator, also author of the Sherman Antitrust Act and brother of General W. T. Sherman) essentially killed the production of silver in Colorado. There is a fascinating U. S. history of silver (and gold) in the 1800's (beyond the scope of this paper) but the Sherman Silver Purchase Act was put into law in 1890 and stipulated that the U. S. government purchase about 4.5 million ounces of raw silver every month (in addition to the Bland-Allison Act of 1878 requiring ~\$4 million purchase). This law was a great boon to western mining companies that had a vast supply of silver at their disposal, both in storage and in the ground, and western farmers who had accumulated large debts (mostly to due to bad luck and droughts) and thought the law would stimulate the economy, combat deflation, create inflation, and then drop the dollar in value (so the debts could be paid in cheaper dollars---and I thought "voodoo economics" was invented in the 1980's). The Treasury Department had issued notes to pay for this silver bullion but holders of the notes could redeem such in either gold or silver. The entire scheme then begin to unravel as people started to buy gold rather than holding silver and the country's gold reserves were showing depletion. In 1893 President Grover Cleveland repealed the Act and silver was on its way out and most mines in Colorado suffered.

It is interesting to note that although the Act was repealed in 1893, the debate on the national scene went on for many years. History books in "my era" (a long time ago) spent several pages talking about the "Goldbugs" of the Republicans and Wm. McKinley (demanding a gold standard) vs. the "Silverites" of the Populists and Democrats and Wm. Jennings

Bryan (champions of free silver) in the presidential election of 1896. The free silver issue really was not settled until the Federal Reserve System was established in 1913. But, hold on. Many of us can remember how two brothers from Texas tried to corner the silver market in the 1970's and early 1980's. In the early 1970's the price of silver on the commodities market was less than \$2 per oz. By about 1980 the brothers owned 50% of the disposable silver and prices artificially soared to over \$50 an oz. Silver mines all over the west were retooling and share prices of silver mining companies were high (at least out of my reach as a small time investor)! But then, the bubble burst as the Federal Reserve "came to the rescue" and the price of silver collapsed (as did the stock market; remember the prime rate of 22% in 1980?). But perhaps some of these silver mines will reopen since in mid-October 2010 the price of silver exceeded \$24 an oz.!



Fig. 3. Double terminated barite crystal collected from the Sherman Mine. Photo courtesy of, and copywrite by, Fabre Minerals at <http://www.fabreminerals.com/specimens/USUSA-mineral-specimens.php>



Fig. 5. Remains of the Leavick Mill on County Road 18, the Fourmile Creek Road. Photo courtesy of Park County, Colorado.

(continued on page 10)

Associated with the mines were the camps and stamp mills to house workers and process the ore. One such settlement was Horseshoe at an elevation of ~10,600 on Fourmile Creek west of Fairplay. The South Park Smelting and Reduction Works built a processor in 1879 that could handle about 10 tons of ore per day (U. S. Forest Service, 2009) from mines on Horseshoe Mountain and Peerless Mountain adjacent to Mt. Sheridan. Crofutt (1881) described Horseshoe as having a population of "...300; in the summer months 800.... It has two stores...two hotels...one smelter...and one saw-mill...The minerals in the vicinity are very rich". I have visited the town site and noted a few holes that evidently were the sites of buildings, at least two excavations that would pretty much fit a privy, and a couple of holes containing rusted cans and broken bottles.

Perhaps a more interesting town site is Leavick further up Fourmile at an elevation of ~11, 250 feet. A processing mill was evidently constructed in the 1880's to process ore from the Last Chance Mine . In 1892 a Mr. Leavick from Leadville bought the Hilltop Mine, and evidently the processing plant. Amazingly he also constructed a tramway from the Hilltop Mine to the mill at Leavick (1.75 miles). Evidently quite the promoter, he somehow got the Denver, South Park and Hilltop Railroad to lay tracks from near Fairplay to the Leavick mill. Production of lead, zinc and silver from the Last Chance, Hilltop and Dauntless continued, albeit sporadically, until the railroad ceased operations in 1923. Since the 1920's the mines have been periodically worked without a great deal of success.

The remaining mill at Leavick is on private property and inaccessible; however, Park County Road 18 runs within a few feet of the structure and offer a great photo opportunity. The Hilltop, Dauntless and Last Chance are on private property. Part of Peerless Mountain is under claim. There are several dumps that appear to be on unclaimed USFS land in the area and I have collected some really nice specimens of limestone with crystals of quartz and calcite and other unidentified minerals. For the thrill of hiking consider a two day event and capture Sherman and Sheridan, Gemini Peak (13,951'), Peerless Mountain (13,337'), Finnback Knob (13,405), and Horseshoe Mountain (13,898"). The latter is one of the most interesting glacial cirques in the Rocky Mountains.

And finally the disclaimer: west of Fairplay is a checker board of public, private, and public but claimed land. It is always wise to check with the local USFS office in Fairplay about land ownership. Portions of this article appeared previously in the CSMS PickNPack. I would have been loved to hear the "Silver-tongue Orator" and "Great Commoner" deliver one of his 500+ speeches in 1896: "You shall not press down upon the brow of labour this crown of thorns [the gold standard], you shall not crucify mankind upon a cross of gold."

REFERENCES CITED

Crofutt, G. A., 1881, Grip-Sack Guide of Colorado: The Overland Publishing Company, Omaha.

Maslyn, R. M., 1996, Mineralized Late-Mississippian Paleokarst Features and Paleogeography in the Leadville, Colorado Area, in, The Caves and Karst of Colorado: National Spenological Society 1996 Convention Guidebook, p. 136- 143.

McConnell, V., 1966, Bayou Salado: Sage Books, Denver.

Mineral Data, retrieved 2009: <http://www.mindat.org/loc-5991.html>

Reed, J. and Ellis, G., 2009, Rocks above the Clouds: The Colorado Mountain Club Press, Golden.

Tschauder, P. J., Landis, G. P. and Noyes, R. R., 1990, Late Mississippian Karst Caves and Bi-Ag-Pb-Zn Mineralization in Central Colorado: Part I. Geologic Framework, Mineralogy, and Cave Morphology, in, Beaty, D. W., Landis, G. P., and Thompson, T. B., eds., Carbonate-hosted sulfide deposits of the central Colorado mineral belt: Economic geology Monograph 7, 308-338.

U. S. Forest Service, retrieved 2009, Lode Mining, A Hard Living from the Hard Rock: <http://www.fs.fed.us/r2/psicc/sopa/autohorse.shtml>

VIRTUAL FIELD TRIP by Jon Mull

Via The Tulip City Conglomerate, Dec 2010

I don't know how much time you spend on the internet, but I am amazed at how many sites there are that show exceptionally beautiful rocks and minerals.

So, I thought it might be nice to share a collection of links to sites that have excellent pictures of the things we like best, ROCKS!



Convention News

By Cathy Patterson, AFMS Convention Chair

Via AFMS Newsletter, December 2010 - January 2011

AFMS / EFMLS Convention
"Gems Along the Erie Canal"

Syracuse, New York

July 7 – 10, 2011

Hosted by the Gem & Mineral Society of Syracuse

As I write this, it's November and we're expecting our first light dusting of snow. It seems worlds away from the warmth of July and fun in sunny Syracuse, where a

great show and convention await you July 7-10, 2010.



Central New York is a neat area that I bet many of you may have never visited. So we encourage you to build in some extra days to maximize what this

area has in store. There are a good number of Herkimer "diamond" dig sites nearby. Look for the next installment in the AFMS Newsletter in February. The various registration forms will be available via the AFMS website early next year and there is a wealth of information available on the web by doing a web search for "Syracuse".

First, a reminder about making reservations for the host hotel – the Ramada Inn, Buckley Rd. You cannot use the national 1-800 number to get the special room rate. Instead, call **315-457-8670** and tell them you want a room for the AFMS/EFMLS Federation Convention. The rate will be \$99 (plus taxes) which includes a full, hot, breakfast daily and a FREE breakfast Sunday morning for the BEAC "Breakfast with the Editors and Webmasters." This is an ideal deal! There are many other hotel

choices within the area in all price ranges and camping is available on the fairgrounds. A list of additional hotel/motels will be available via the AFMS website early next year.

With all our Syracuse club has to do to make this event come off the way you expect us to, we have no choice but to rely on you all for exhibit cases. Make this your year to shine. Easterners, you need to let the whole world see your good stuff in the light of day. Our target is 100 cases which is huge for the East. With everybody's help we can do it. Think of it as, "If you don't do it; it won't get done." Competitive exhibit forms will be on line soon.

We are planning some interesting field trips for those sparkly Herkimers and the New York fossil the eurypterid. Further north in the state there's a rich pegmatite area.

In addition, for those not rockhounding we have an interesting canal boat ride along the newly restored section of the Erie Canal.

There's nothing like it in the US. We aim to please! Contact me if you wish.

Make plans now to meet your friends old and new in Syracuse. This will be a week to remember!

Cathy Patterson

315-638-8817

315-480-8908

<cathypatterson@verizon.net>



A cannibal entered the meat market to buy something nice for dinner. The owner greeted him and told him to look around. The cannibal began to inspect the meat case and noticed the market specialized in brains. Upon further inspection he noticed a marked disparity between the costs of brain meats.



A carpenter's brain sells for \$1.50 per pound. A plumber's brain sells for \$2.25 per pound. He noticed with alarm that a mineral collector's brain sells for \$375.00 a pound. With not a little curiosity he asked the owner why the huge difference in price between the similar meats. The owner responded with a deadpan look on his face, "Do you realize how many mineral Collectors it takes to get a pound of brains?"

A KING VISITS A PAWNBROKER

A king was running low on cash. Desperate for money, he began selling his possessions. Finally, he was down to the Star of the Euphrates. At the time, it was the most valuable diamond in the world. Reluctantly, the king took it to a pawnbroker. The pawnbroker offered him 100,000 dinars. The king was outraged. "I paid a million dinars for it," he said. "Don't you know that I am the king?" The pawnbroker replied, "When you wish to pawn a Star, makes no difference who you are."



Jokes via The Rockhounder, Dec 2010



BUSINESS NAME, INC

QUARRY QUIPS

Carolyn White, Editor
2225 N. Fountain
Wichita, KS 67220
editor@wgmsks.org
www.wgmsks.org

Non Profit Org
US Postage Paid
Wichita, KS
Permit No 127

TIME VALUE
DO NOT DELAY

Next Meeting:

Sunday, January 23, 2:00 pm
Community of Christ Church
3500 S Web Road

RETURN SERVICE REQUESTED

«Name»

«Name 2»

«Address»

«City State zip» «Sort Field»



WGMS QQ moving to email distribution in February 2011.

See inside for details!

What's in this Issue

Page	Club Business	Page	Special Interest
2	About Our Club		AFMS News:
5	Calendar - WGMS Events	11	Convention News
3, 6	Field Trips		RMFMS News
4	Meeting Minutes	8-10	All Roads Lead to Colorado Springs - part 5
5	Member Birthdays	7	Fun, and Smell the Roses (Garden Show)
3	Membership	7	WGMS Newsletter Distribution Changes
2	Officers		
3	Programs		
6	Show Report		

Quarry Quips Article Deadline: January 28, 2011
Send articles to Carolyn White. Contact information at top of page.

